

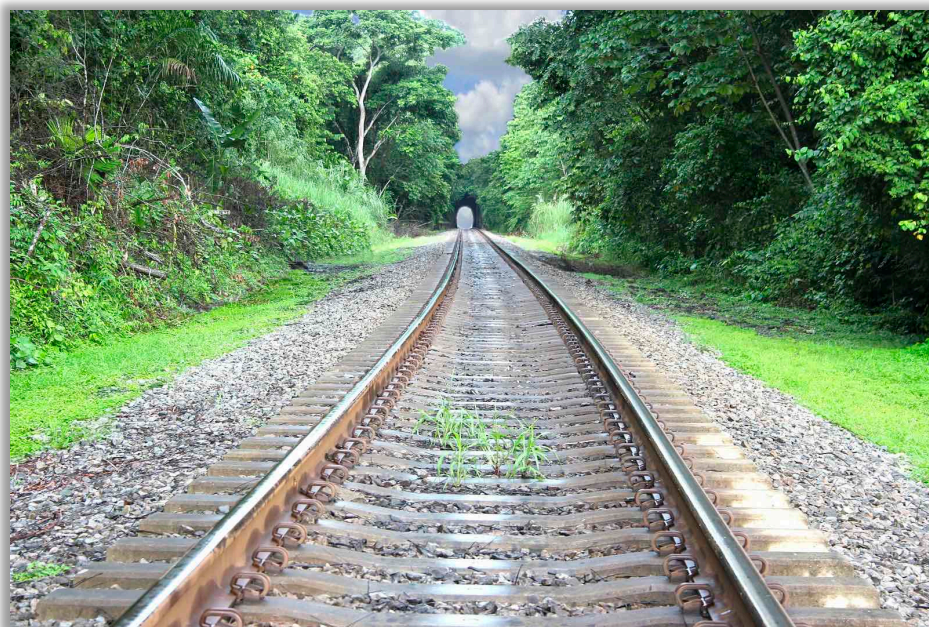
THE PANAMA RIDE

A bridge that unites two oceans
and two continents

(BMW)

Reference:	XPLM-001
Minimum for Tour	1 Rider
Maximum for Tour	5 Rider / 10 People
Lenght:	7 Days / 6 Nights
Departure Days:	According to Reservation
Suggested age:	23 years and up

The Experience



Ride along the isthmus' Pacific coast, experiencing wonderful scenery and vivid cultures. Draw out the uniqueness of each destination, from world-class surfing spots to the amazing Panama Canal.



Panama City

The Old Colonial City and the New Metropolis

The City of Panama was founded in 1519. Currently the city is a mixture of a megapolis ranked as the 17th city with more skyscrapers in the world and a colorful Spanish colonial city, which has buildings from the 17th century.

As the first city that the Spaniards founded on the Pacific Coast of the whole continent, it served as the departure point for great accomplishments for Spain, as it was the conquering of the Empire of the Incas in 1532. Due to the narrowness of the Isthmus the city became a strategic point in the route of the gold extracted from Peru and elsewhere in the Pacific Coast of Latin America. Located between the tropical forest and the Pacific Ocean the city of Panama has become a destination with a great variety of options; from the greatest biodiversity in the whole of Central America, passing through historical places awarded as World Heritage Sites by UNESCO, to a vibrant modern city with a night life that pairs with the biggest cities of the world.



Causeway Amador

The Amador Causeway is a road that connects the islands of Perico, Naos and Flamenco. The road starts at the coastline near the Bridge of Americas and goes out into the Pacific Ocean some 6 miles. It was constructed in 1913 with the rocks that were taken from Corte Culebra (Gaillard's Cut), which represented a major challenge during the construction of the Panama Canal. The current site used to be a US military post, which was key to the protection of the canal during the Second World War. Currently the Amador Causeway is one of the most popular places in Panama City due to the fact that locals and tourists find a wide variety of possibilities to recreate, which include jogging, skating, riding bicycles or walking by the sea. You can also find a wide variety of restaurants, bars and discos, a Convention Center and Frank Gehry's Biodiversity Museum. Amador Causeway is the home for the Smithsonian Institute's Center for Tropical Research and the Punta Culebra Center for the Exhibition of Marine Life. From the causeway you can see the South entrance to the Panama Canal, the America's Bridge, the Colonial Spanish Old Town and the many skyscrapers of the City of Panama.



Agua Clara Lock Gates

Located at the Atlantic side of the Panama Canal, the Agua Clara Locks and its surroundings offer fascinating scenarios and striking contrasts, which range between one of the world's most impressive works of engineering, a jungle with such a complex biodiversity that scientists from all over the world arrive at the Smithsonian Institute Headquarters located in the middle of Gatun Lake in order to study it, and a colonial fortress that has been awarded as a World Historical Heritage Site by UNESCO.



From the Visitor Center of Agua Clara you will be able to see the biggest ships of the world use the system of locks of the Panama Canal in order to cross from the Atlantic to the Pacific.



San Lorenzo Fort

Located above a cliff at the mouth of River Chagres on the Atlantic Ocean, the Fortress of San Lorenzo was crucial for the protection of the Spanish ships, which came out of the river laden with the gold they had taken from the Incas in Peru. Under the commission of a military engineer by the name of Baptise Antonelli, the fort was constructed at the ends of the 16th century, becoming with the fortresses and batteries of Portobelo, an extremely important part of the third most protected Spanish site in the whole of the continent.



After 70 years of being unsuccessfully attacked by pirates, Pirate Joseph Bradley finally accomplished taking this fortress surprising the Spanish with an attack from behind. The master plan was created by Pirate Henry Morgan, who less than a month later entered into the Chagres River to arrive, destroy and plunder the City of Panama.

The Madden Dam



It was built in 1935 with the intention of controlling the strong and unpredictable currents of the Chagres River. The dam created what is now known as Lake Alajuela.

Although not directly connected to the transited area of the Canal, the lake feeds almost a third of the water used by the Canal annually. Being separated from the traffic areas there are very few controls on the water level, making it a suitable lake for the hydroelectric plants that feed Panama City.

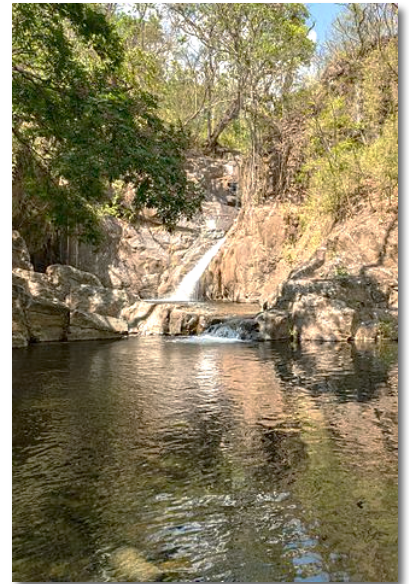


Boquete

Is a small mountain town in Panama. It is located in the western-most Province of Chiriquí, about 60 kilometres (37 mi) from the border with Costa Rica, and lies on the Caldera River, in Panama's green mountain highlands. Because of its elevation, some 1,200 metres (3,900 ft) above



sea level, its climate is cooler than that of the lowlands. Its scenic location, temperature, and natural environment make it popular with Panamanians and attracts tourists and retirees from all over the world. Furthermore Boquete is only 40 miles from the border between Panama and Costa Rica.



Chiriquí



In this province, you can practice all types of tourism: ecotourism and adventure among others, has beautiful mountain landscapes. Nice climate will make you feel in contact with nature.

In its coasts, you will enjoy its beaches, surf, sport fishing, sun. It limits the west with Costa Rica and the north with Bocas del Toro, the south with the Pacific

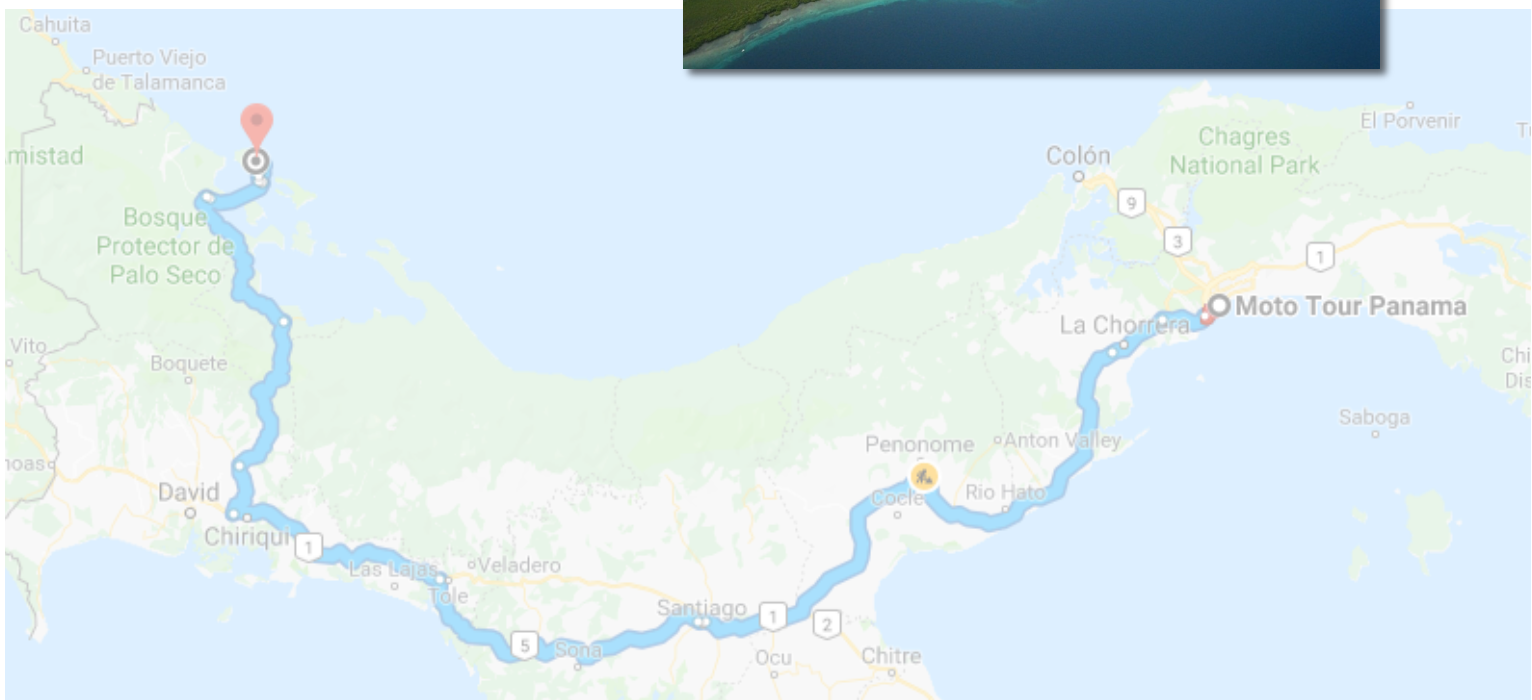
Ocean and the east with the Province of Veraguas.



Bocas del Toro



Located on the north coast of the Panamanian Caribbean lies the magical destination of Bocas del Toro. The province of Bocas del Toro extends from the mainland to the archipelago. It contains some of the largest rainforests in Central America and has 9 main islands, 52 cays and thousands of islets. Home to some of the UNESCO World Heritage Sites and the first marine park of Panama, Bocas del Toro is considered as one of the best ecotourism destinations in the country.



INCLUDED

Transfer hotel/airport/hotel
Welcome Dinner
BMW Motorcycle
Accommodations
Breakfast
Bilingual Guide (Spanish/English)
Adventure Brief
2 Side Suitcases
Day by day description guide
Basic motorcycle insurance
24 hour customer service
Motorcycle GPS (only for Self Guided Tours)

NOT INCLUDED

Air transportation tickets or fees
Personal medical insurance
Gratuities
Soft and Alcoholic beverages
Entrance fees
Bike equipment, available upon request
Fuel
Tolls
Parking
Not specified services
Lunches and Dinners

MOTO TOUR PANAMA, S.A.

Darby Guzmán
+507-264.8515
+507-6223.9519
mototour@xplore.la

www.mototourpanama.com (corregir enlace)

